



9thBridgeSchool

Reopening Town Hall

June 23, 2020

Guiding Priorities



9th Bridge School will...

- Prioritize in-person education experiences whenever possible
- Maintain small class sizes so students can attend class on campus 5 days per week
- Seek to keep our early childhood program open during mandated K-12 school closure

Sources for Policy Considerations



- Guidelines issued by CDC, SNHD, Licensing, the Governor's Office, and NAIS
- Consultation with:
 - Task force committees
 - Medical experts
 - Local and national childcare and independent schools
- Reopening guidelines issued by other states
- Still awaiting Nevada's school reopening guidelines

*Due to the nature of the COVID-19 pandemic, please be aware that policies may change prior to the first day of school and during the school year

Reopening Task Force Committees



- Comprised of parents, teachers, administrators, board members, industry experts and community members
- Committees:
 - Distance Learning & Technology
 - Health & Safety
 - Marketing & Communication
 - School Community Support & Culture
- Will discuss their recommendations at the next Town Hall
- Still time to join a Task Force Committee!

Health & Safety - Focus Areas



- Limiting the risk of exposure for children and staff
- Practicing good hygiene and physical distancing
- Increasing the frequency of cleaning

Health & Safety - Limiting Exposure



- Please keep your child at home if your child:
 - Is not feeling well
 - Has a fever of 100.4 or higher, cough, shortness of breath, or other symptoms of COVID-19
 - Recently had close contact with a person with COVID-19 or who is awaiting test results
- We will be requiring this from our staff as well

Health & Safety - Limiting Exposure



Staff and Child Health Screenings

- Staff and families self-check temperature at home prior to arrival
- Upon arrival, staff and children will be given:
 - A temperature check with a non-contact thermometer
 - A screener questionnaire
 - Visual well-check
- Students will be temperature checked once in the afternoon as well
- Staff or children with a fever, cough or shortness of breath will be sent home for at least 48 hours or until they are cleared by a physician

Health & Safety - Limiting Exposure



Parents and Visitors

- Non-essential visitors will be limited
- Visitors will be given a temperature check and screening questionnaire
- Face mask required for visitors 3 and older
- Full-time, substitute on staff
- Tours will be conducted virtually
- Family meetings will be conducted in a separate building
- No prospective families will go into the classrooms

Health & Safety - Limiting Exposure



Face coverings

- Teachers will utilize face coverings in the classroom
- Young Toddler and Toddler children will not be required to have a face covering due to the risk of suffocation
- Awaiting guidance from Nevada officials about face coverings for students Pre-K and older
 - We encourage your child to wear a face mask in the classroom
 - We encourage you to prepare your child now for wearing a face mask in the classroom

Health & Safety - Limiting Exposure



Drop-off

- Face covering required when entering campus for parents and children
- Social distancing required
- Drop-off will occur outside
- Parents stay until child is screened and cleared
- Cooling-off area provided for students who register a low fever
- Late drop-off: Administrator to conduct health screening and bring the child to the classroom

Health & Safety - Limiting Exposure



Pick-up

- Face covering required when entering campus for parents and children
- Social Distancing required
- Pick-up will occur outside
- Early Pick-up: Administrator will bring child from the classroom to the outdoor courtyard.

Health & Safety - Limiting Exposure



Cohort Grouping

- Children kept within cohort groups throughout the day and cohorts will not be combined.
 - Young Toddler
 - Toddler & Pre-K
 - Lower Elementary and Upper Elementary
- Aftercare: Groups may be combined after 5:15 pm or occasionally as needed
 - Combined groups will be in the multipurpose room, but each group will have their own distinct space.

Health & Safety - Limiting Exposure



Specials and Transitions

- In addition to children being kept in consistent groups, they will also not share spaces
- Specials will take place in the classroom (except for gardening)
- If a class is leaving the classroom, they will use the outdoor area instead of the hallways if possible

Health & Safety - Limiting Exposure



Lunch and Snack

- Individual meals and snack, or teacher will serve food to children
- Plates, utensils and cups for milk will be disposable

Water Bottles

- Water bottles need to go home every day to be washed and disinfected
- Only the bottle refilling station will be available at the water fountain.
Children should not drink from communal water fountain

Health & Safety - Limiting Exposure



Nap

- Parents will most likely supply nap bedding and sheet. Nap items to be sent home each day to be laundered
- 9th Bridge will supply the nap cot, which will be disinfected every day
- Cots positioned so that students are face to feet instead of face to face, and cot placement charts will be created so cots are placed far apart

Health & Safety - Limiting Exposure



Personal Items

- Personal items for children should be limited, and must fit within the assigned cubby or a backpack.
- All personal items must be in a sealed bag or backpack
- Sealed bags and backpacks should not touch each other inside the classroom
- All items should be labeled with child's name

Health & Safety - Increased Cleanings



- Additional staff member responsible for disinfecting high-touch surfaces throughout school and classrooms
- Classroom high-touch surfaces disinfecting when empty
- Playground equipment disinfecting after each cohort use
 - Playground will be closed for afternoon extended care
- Additional deep-clean on Fridays
- Disinfectant supplies provided to teachers for frequent cleaning during day

Health & Safety - Limiting Exposure



If your child becomes sick

- You will be called to pick up your child within 1 hour
- Your child will be moved into an isolated space within the office (but still under proper supervision of administration)
- Your child cannot return without a doctor's release

Health & Safety - Limiting Exposure



If there is a case of COVID-19 in our community

- SNHD and licensing will be notified and they will advise next steps
- If a student or teacher tests positive for COVID-19:
 - Cohort classmates and teachers will most likely be required to quarantine for 14 days
- If a parent tests positive for COVID-19:
 - The child will self-quarantine for 14 days

*Note: SNHD will ultimately determine quarantine and closures. The above is current guidance from SNHD.

Health & Safety - Limiting Exposure



Self-Reporting

- Staff and families are required to self-report if they have:
 - Symptoms of COVID-19,
 - A positive test for COVID-19
 - Been exposed to someone with COVID-19 within the last 14 days
 - Recently traveled from somewhere outside the United States or on a cruise ship or river boat.

*Note: Per CDC guidelines

Health & Safety - Hygiene & Cleaning



In the Classroom

- Beginning of the year lesson plans on...
 - Personal space & boundaries
 - Proper handwashing
 - Proper coverage for coughs/sneezes
 - Health, Wellness & Nutrition
- Added hand washing/sanitizing between activities or transitions
- Nonverbal, visual cues to remind students to wash hands or use a tissue
- Clean high touch surface areas between groups

Health & Safety - Limiting Exposure



In the Classroom

- Avoid community supplies when possible; students will receive individual seat sacks to store frequently used items (i.e. pencils, notebooks, folders, etc.)
- Teachers will go to each individual student to pass out materials needed for a specific lesson or activity
- Labeled bins for clean & used supplies when community supplies are needed

Health & Safety - Physical Distancing



In the Classroom

- 6-ft of distance whenever possible (ex. spacing markers)
- Adequate spacing & rows for whole group lessons
- Students face in same direction as much as possible
- Limit number of students per center
- Increase in small group instruction & interactions
- Individual vs. group table activities
- Daily utilization of outdoor environments (as weather permits)

6 Scenarios for Distance Learning



Scenario 1

- A **student** is absent short-term due to illness, symptoms of illness or due to non-school related COVID-19 exposure.

Scenario 2

- A **cohort group** of students quarantine (14 days) at home due to an exposure on campus that was only traced to that group's location or activity.

Note: These scenarios could be prompted by the local health district.

6 Scenarios for Distance Learning



Scenario 3

- The **whole** school faces a **short**-term closure due to a **small**-scale exposure across campus. (ex. 2-5 days)

Scenario 4

- The **whole** school faces a **long**-term closure due to a **large**-scale exposure across campus. (ex. 14+ days)

Note: These scenarios could be prompted by the local health district.

6 Scenarios for Distance Learning



Scenario 5

- The ***whole school*** (ECE & Elementary) is closed ***indefinitely*** due to increased cases across the city or state.

Scenario 6

- ***Only Elementary*** is closed ***indefinitely*** due to an increase in cases but 9th Bridge remains ***open for childcare*** (Young Toddler - Pre-K).

Note: These scenarios could be prompted by city or state government mandates.

Distance Learning



SHORT TERM (2-5 days)

Academic Shifts

- Conduct student wellness check-in
- Provide learning activities (ECE) or assignments (Elem.) covered in class
 - Google Classroom
 - Email
 - Pick-up available
- Not feasible? Make-up key assignments at a later date.
- For multiple short-term absences due to illness, portions of in-class lessons may be recorded.



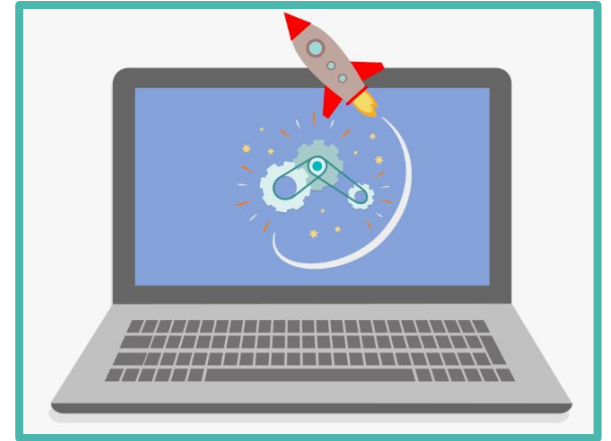
Distance Learning



LONG TERM (5+ days)

Academic Shifts

- Personal laptops or tablets (Elementary)
 - School email address
- Google Classroom
 - Weekly Learning Menu/Schedule
 - Pre-recorded videos
- Live instruction
- Curriculum workbooks (Elementary & PreK)
- Distance Learning home kits
 - Learning tools & Assessment materials
- Teacher office hours
- Customized Student Learning Plans



**Next Town Hall:
July 21st @ 9 am**

Q&A
